

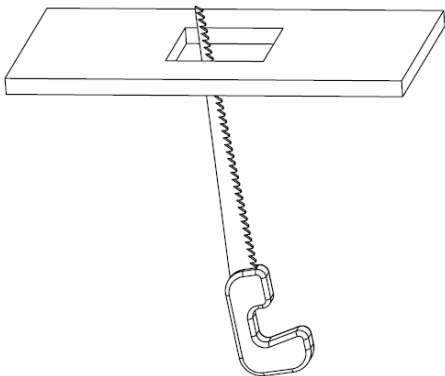
DIVA TRIMLESS NAKED INSTALLATION INSTRUCTIONS



WARNING - RISK OF FIRE AND ELECTRICAL SHOCK. FIXTURE MUST BE INSTALLED BY A QUALIFIED ELECTRICIAN ONLY. FIXTURE IS INTENDED FOR INSTALLATION IN ACCORDANCE WITH THE NATIONAL ELECTRICAL CODE, LOCAL AND FEDERAL SPECIFICATIONS. DISCONNECT POWER AT ELECTRICAL PANEL BEFORE SERVICING. CONNECTION OF LUMINAIRE TO POWERED DRIVER WILL RESULT IN PERMANENT DAMAGE TO THE LED AND VOIDED PRODUCT WARRANTY. RETAIN THESE INSTRUCTIONS FOR MAINTENANCE REFERENCE.

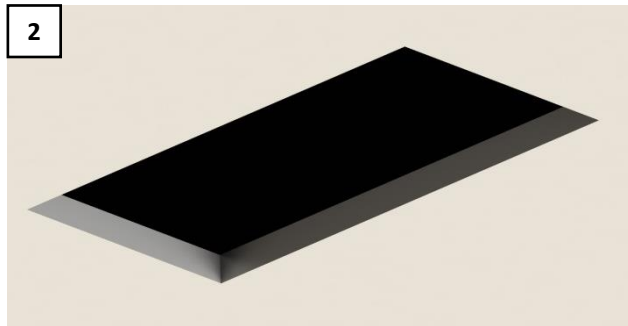
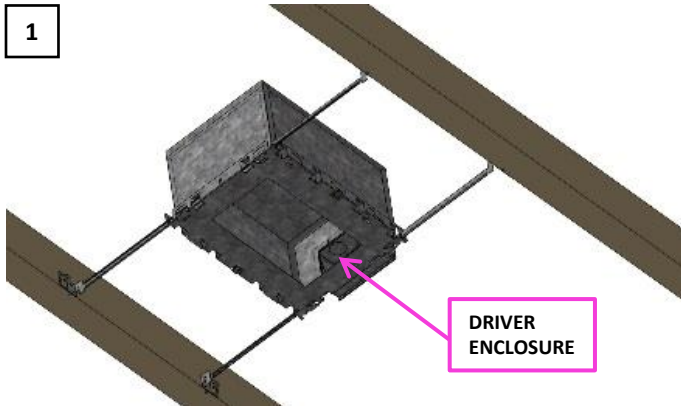
MATERIALS USED FOR CEILING FIXATION SHOULD CONFORM TO THE RELEVANT BUILDING REGULATIONS.

CUTOUT TABLE

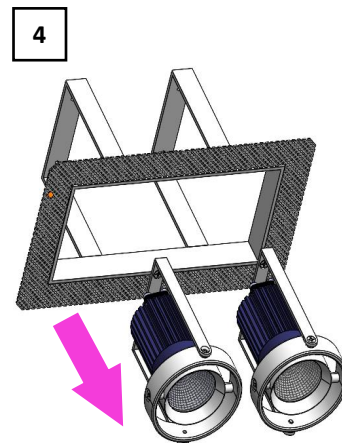


FIXTURE	CUTOUT
DIVA 2TS N	3.31" X 3.31" / 84mm X 84mm
DIVA 2TD N	3.31" X 6.3" / 84mm X 160mm
DIVA 2TT N	3.31" X 9.3" / 84mm X 236mm
DIVA 3TS N	4.25" X 4.25" / 108mm X 108mm
DIVA 3TD N	4.25" X 8.18" / 108mm X 208mm
DIVA 3TT N	4.25" X 12.13" / 108mm X 308mm
DIVA 5TS N	6.14" X 6.14" / 156mm X 156mm
DIVA 5TD N	6.14" X 12.05" / 156mm X 306mm
DIVA 5TT N	6.14" X 17.95" / 156mm X 456mm

FIXTURE INSTALLATION

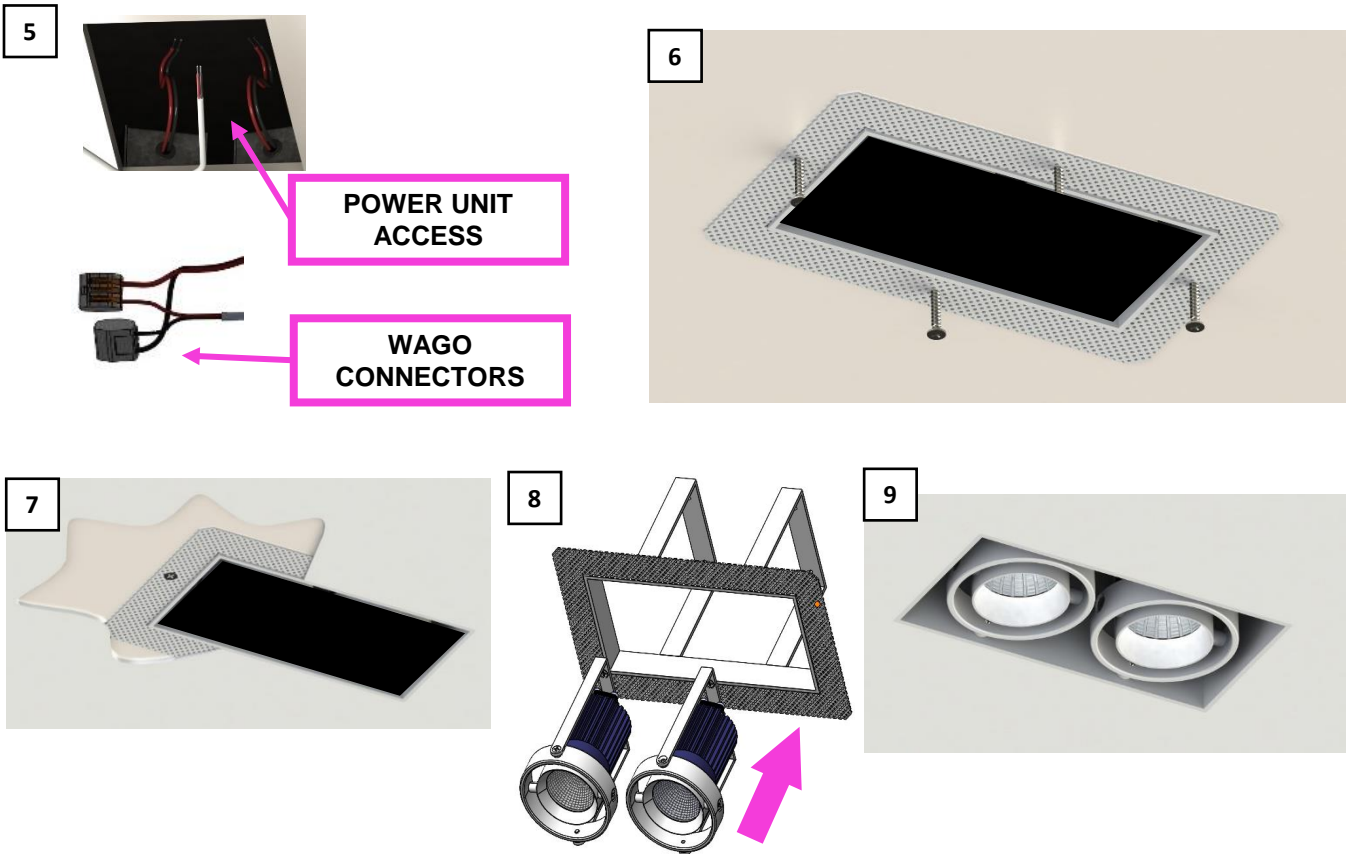


3	FIXTURE	DRIVER LOCATION	DRIVER QUANTITY	DRIVER SPECIFICATIONS
	DIVA 2TS N	REMOTE/RETRO-FIT	1	350 mA 13W
	DIVA 2TD N	REMOTE/RETRO-FIT	1	500 mA 18W
	DIVA 2TT N	REMOTE/RETRO-FIT	1	700 mA 22W
	DIVA 3TS N	J-BOX ON BOARD	1	500 mA 18W
	DIVA 3TD N	J-BOX ON BOARD	2	500 mA 18W
	DIVA 3TT N	J-BOX ON BOARD	3	500 mA 18W
	DIVA 5TS N	J-BOX ON BOARD	1	700 mA 28W
	DIVA 5TD N	J-BOX ON BOARD	2	700 mA 28W
	DIVA 5TT N	J-BOX ON BOARD	3	700 mA 28W



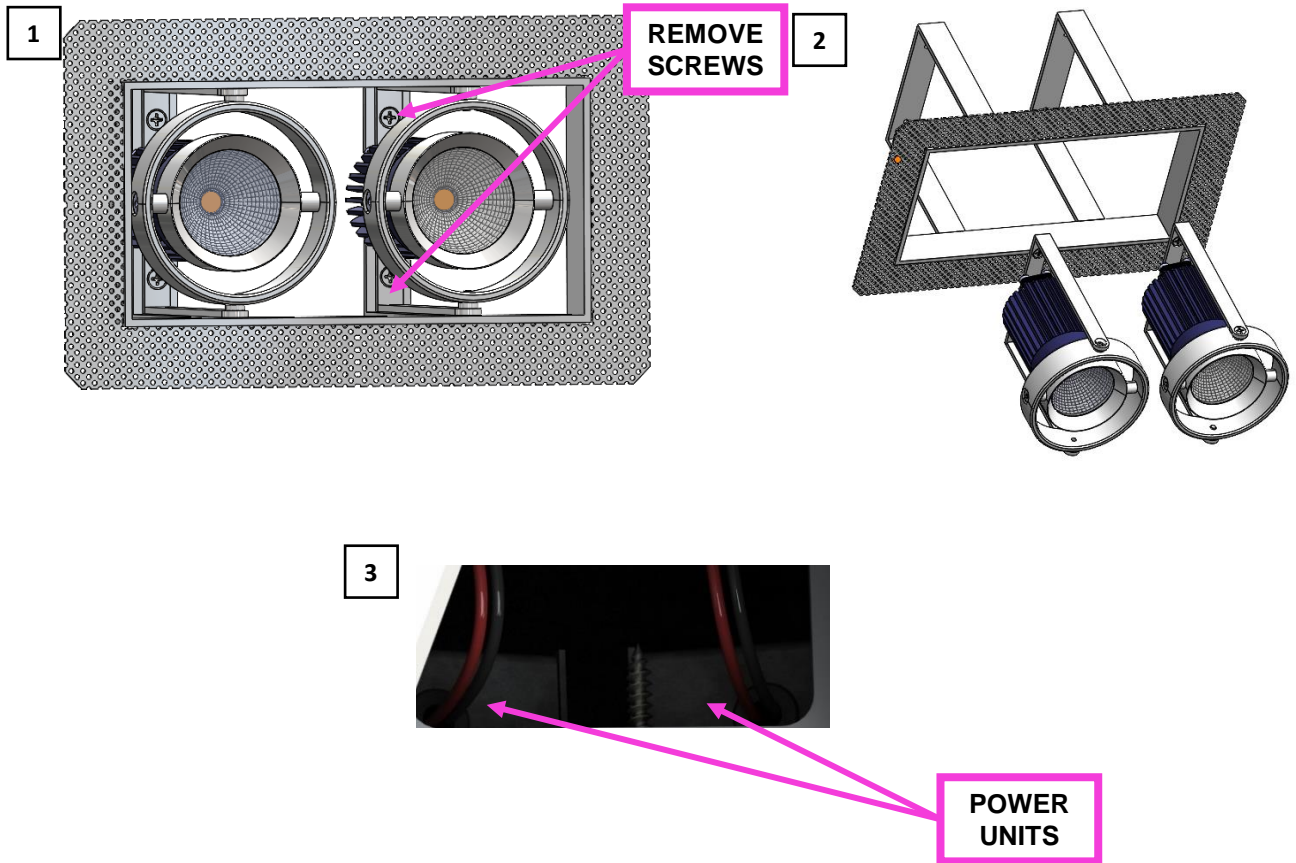
1. IF USING AN IC BOX, INSTALL USING THE HANGER BARS PROVIDED. (FIGURE 1)
2. CUT OUT IN CEILING PER CUT OUT TABLE OR USE THE IC BOX AS A GUIDE IF AVAILABLE. MAKE SURE CONDUIT FOR POWER UNITS IS ACCESSIBLE AFTER CUTTING OPENING IN CEILING. (FIGURE 2)
3. INSTALL THE POWER UNIT CONNECTING LINE VOLTAGE WIRES TO POWER SUPPLY. GROUND TO GREEN WIRE, WHITE/BLUE TO NEUTRAL LINE WIRE AND BLACK/BROWN TO HOT LINE WIRE.
4. REMOVE GIMBALS ASSEMBLY BY REMOVING SCREWS. PULL OUT THE LIGHT TO REMOVE AND ACCESS DRIVERS. (FIGURE 4)

FIXTURE INSTALLATION



5. CONNECT EACH PAIR (RED-BLACK) OF LOW VOLTAGE WIRES TO DRIVER USING PROVIDED CONNECTORS. (FIGURE 3) SHOWS THE INFORMATION ABOUT THE DRIVER QUANTITY AND SPECIFICATIONS.
6. CONNECT RED TO RED AND BLACK TO BLACK (FIGURE 5)
7. INSERT FIXTURE TRIM INTO THE CUT-OUT AND SECURE TO THE CEILING USING APPROPRIATE SCREWS AND FIBERGLASS TAPE. (FIGURE 6)
8. APPLY MUD MATERIAL TO THE PERFORATED SHEET AND LET IT DRY COMPLETELY. (FIGURE 7)
9. MAKE THE ELECTRICAL CONNECTION TO THE GIMBALS ASSEMBLY AND PUT IT BACK AND SCREW IT IN THE ENCLOSURE. (FIGURE 8)
10. TURN POWER BACK ON TO THE FIXTURE AND ORIENT THE LIGHT ENGINES TO ACHIEVE THE DESIRED LIGHT DISTRIBUTION. (FIGURE 9)

FIXTURE MAINTENANCE



1. REMOVE GIMBALS ASSEMBLY BY REMOVING SCREWS . (FIGURE 1)
2. PULL OUT THE LIGHT TO REMOVE AND ACCESS DRIVERS. (FIGURE 2)
3. PULL POWER UNITS OUT THROUGH THE OPENING TO ACCESS WIRING AND DRIVERS. (FIGURE 3)
4. WHEN FINISHED WITH MAINTENANCE, RE-ATTACH THE LIGHT WITH THE SCREWS TO THE LIGHT SUPPORT.